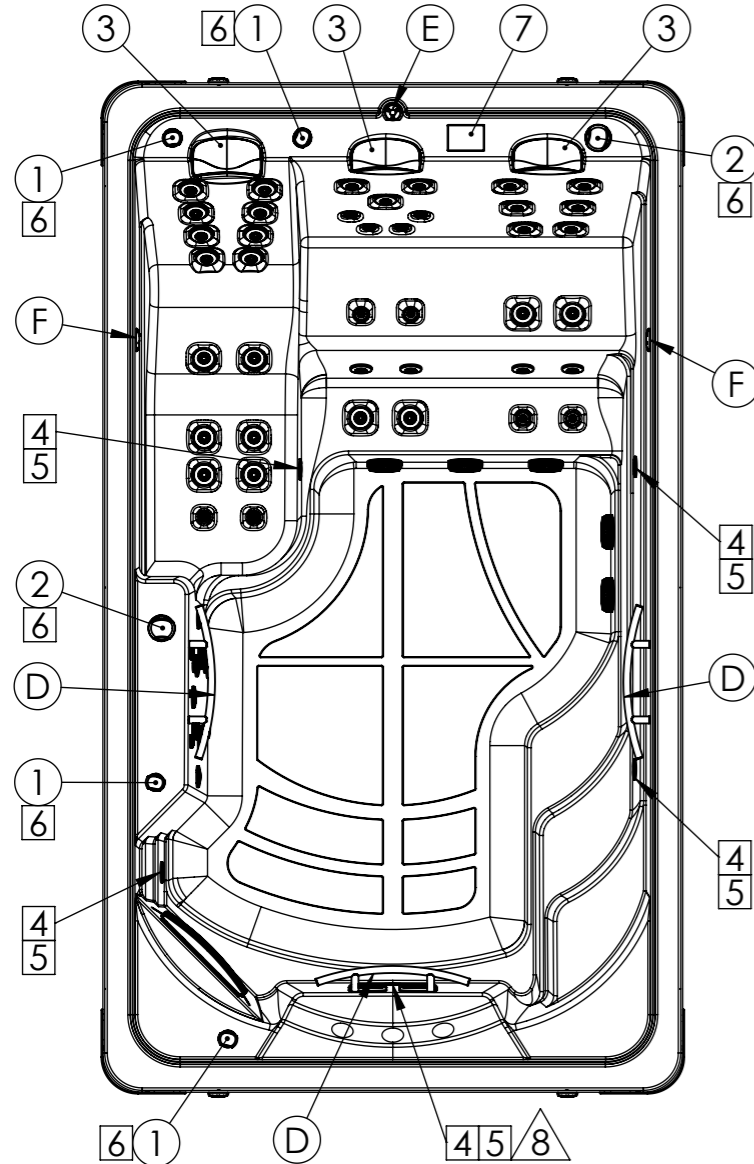


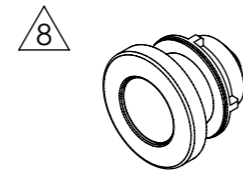
According to our policy of continuous improvement, dimensions, features or components of this product can be partially or completely changed without prior notice. It's Customer responsibility to verify that this is the last version of the drawing

Property of IBERSPA S.L. Avda. Pla d'Urgell 2-8 25200 Cervera, Spain. Don't use without permission. Keep this information confidential and use it solely for the permitted purpose.

CONTROL COMPONENTS



ONE LIGHT OPTION

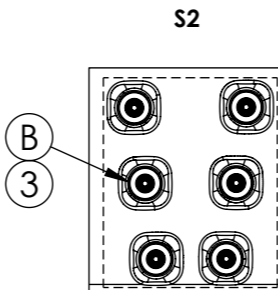
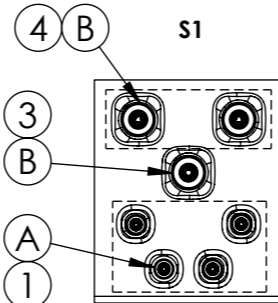
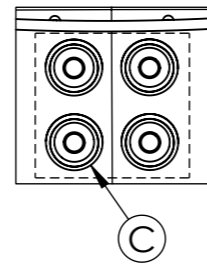


HIGH INTENSITY COLOURS
LED SPOTLIGHTS + STEEL
ESCUTCHEON SPOTLIGHT
RCOM0063

PILLOWS



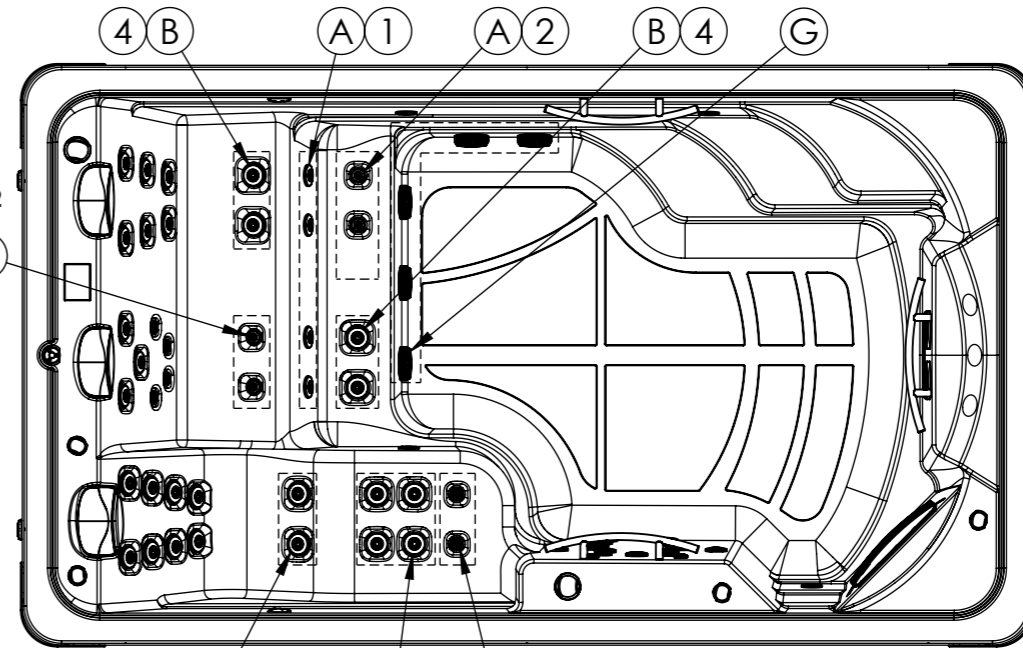
CC



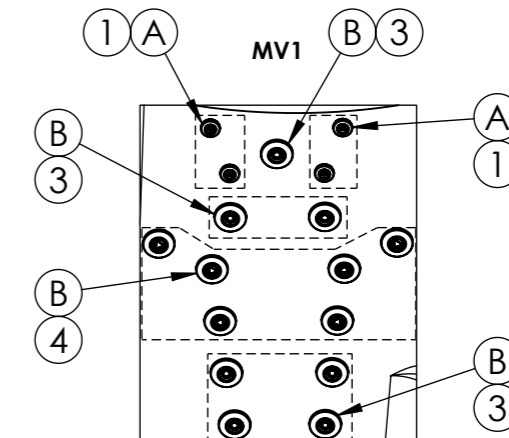
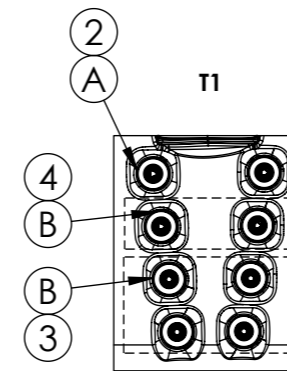
S2

S1

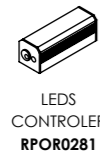
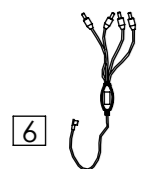
T1



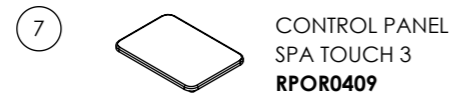
4 B 3 B A 1 MV1



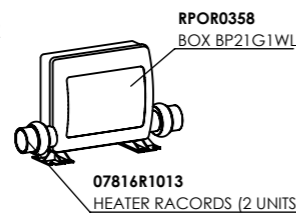
LIGHT COMPONENTS



CONTROL PANELS

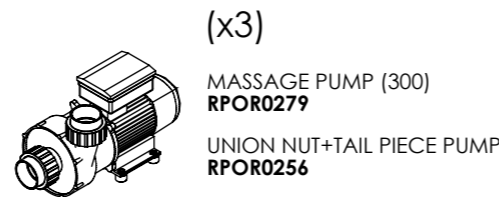


HEATER

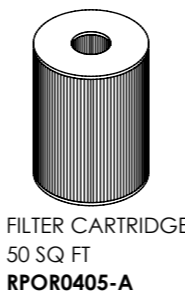


- RPOR0101 - TEMPERATURE PROBES GS I GL (x2)
- RPOR0105 - HEATER 3KW GS I GL
- RPOR0358-A - DIGITAL PANEL BP21G1WL
- RPOR0330 - EXPANDER BOARD KIT FOR SYSTEM BP21G1WL
- RPOR0358-B - LEVEL SENSOR

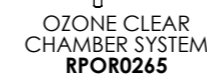
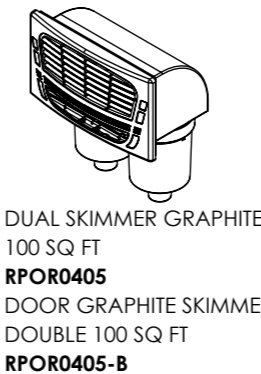
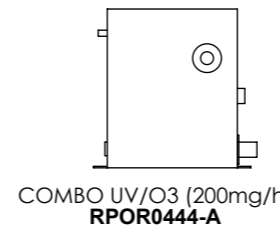
PUMPS



FILTRATION



DESINFECTATION



AUDIO Option 4.1



OTHER COMPONENTS



COVER 71279